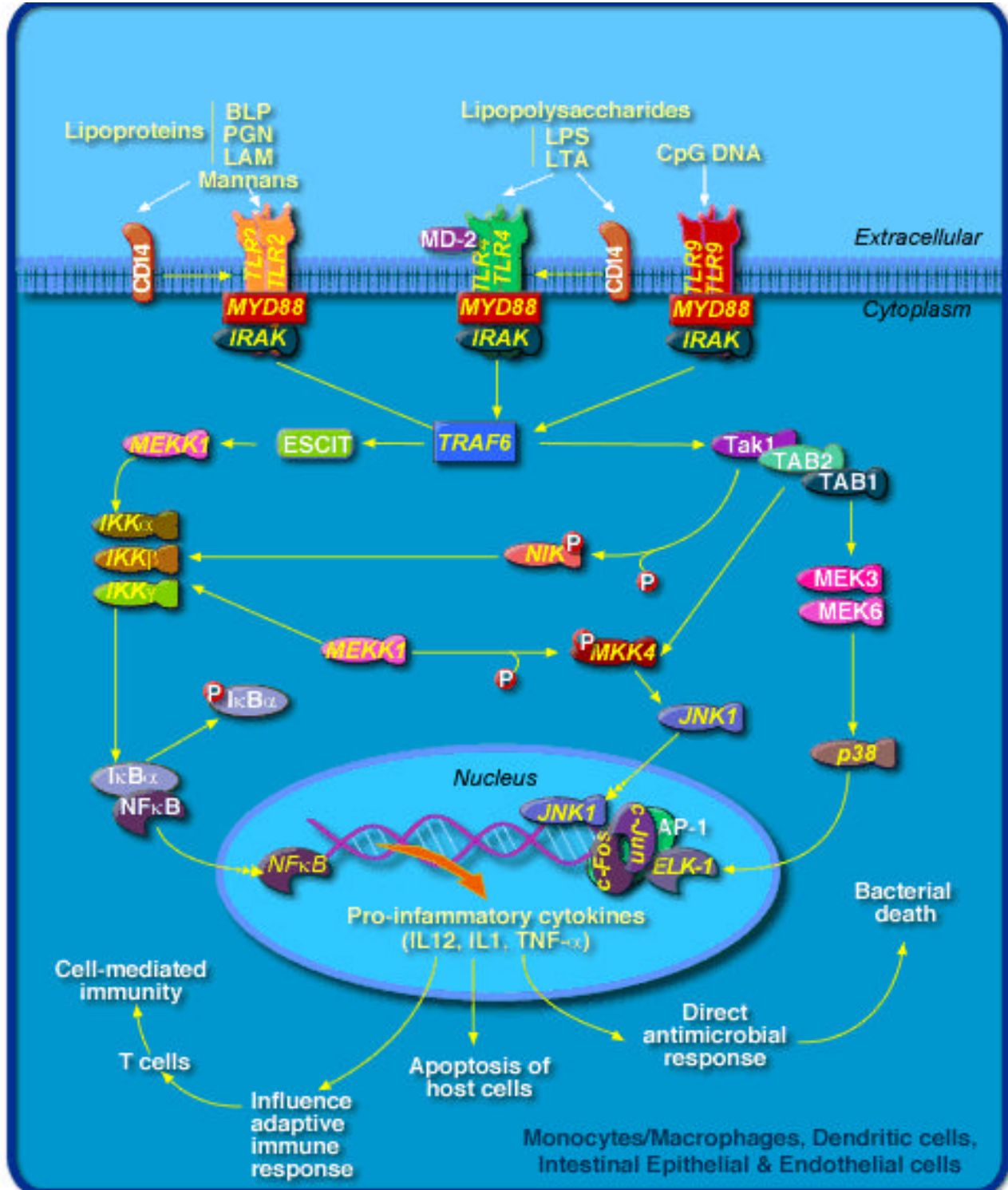


Toll Like Receptor Signaling Pathway



BioCarta US
3830 Valley Center Drive,
#705-161
San Diego, CA 92130

Tel: 858.759.4874
Fax: 858.759.8462
Email: info@BioCarta.com
http://www.biocarta.com

BioCarta Europe GmbH
Borsteler Chaussee 53
D-22453 Hamburg

Tel: +49-40 525 70 30
Fax: +49-40 525 70 3-77
Email: info.de@biocarta.com

BioCarta UK LTD
P.O.Box 281
Kidlington D.O
Oxford, OX5 2DE

Tel: +44 (0) 1865 376 176
Fax: +44 (0) 1865 376 179
Email: info.uk@biocarta.com

BioCarta Japan KK
Toyo Ekimae Building
2-20, Toyo-2-chome
Koto-ku, Tokyo 135-0016 Japan

Tel: 03 5632 9624
Fax: 03 5632 1126
Email: info.jp@biocarta.com

Clone	Isotype	Applications	Specificity	Format	Size	Cat#
anti-CD14						
TUK4	Mouse IgG1	FCM	Hu	APC	100 min.	02-05-1006
TUK4	Mouse IgG1	FCM	Hu	Biotin	100 min.	02-05-1008
TUK4	Mouse IgG1	FCM	Hu	Biotin	400 min.	02-05-1009
TUK4	Mouse IgG1	FCM	Hu	FITC	100 min.	02-05-1002
TUK4	Mouse IgG1	FCM	Hu	FITC	400 min.	02-05-1003
TUK4	Mouse IgG1	FCM	Hu	Purified	100 µg	02-05-1001
TUK4	Mouse IgG1	FCM	Hu	R-PE	100 min.	02-05-1004
TUK4	Mouse IgG1	FCM	Hu	R-PE	400 min.	02-05-1005
TUK4	Mouse IgG1	FCM	Hu	TC	100 min.	02-05-1007
UCHM-1	Mouse IgG2a	FC, IHC	Hu	Purified/w Azide	0.2 mg	IMG-326
UCHM1	Mouse IgG2a		Hu		2.0ml	11-05-12919
UCHM1	Mouse IgG2a		Hu	Biotin	0.1mg	11-05-12921
UCHM1	Mouse IgG2a	fl	Hu	FITC	0.1mg	11-05-12922
VPM65	Mouse IgG1		Sh		2.0ml	11--12926
anti-CD14 Ab-1						
BA-8	Mouse IgG1/k	FCM, IFC	Hu	Purified/no Azide	100 ug	04-10-3224
BA-8	Mouse IgG1/k	FCM, IFC	Hu	Purified/no Azide	200 ug	04-10-3225
BA-8	Mouse IgG1/k	FCM, IFC	Hu	Purified/w Azide, BSA	20 µg	04-10-3222
BA-8	Mouse IgG1/k	FCM, IFC	Hu	Purified/w Azide, BSA	100 µg	04-10-3223
BA-8	Mouse IgG1/k	FCM, IFC	Hu	Purified/w Azide, BSA	200 µg	04-10-3221
anti-CD14 Ab-2						
14C02	Mouse IgG2a	IHP	Hu	IHC Prediluted	7 ml	04-10-3226
Applications						
<ul style="list-style-type: none"> - Immunohistology (Formalin/paraffin only) (Use Ab at 1:20-1:40 for 60 min at RT) * [Staining of formalin-fixed tissues REQUIRES boiling tissue sections in 10mM citrate buffer, pH 6.0, (BIOCARTA'S Cat. #AP-9003), for 10-20 min followed by cooling at RT for 20 min.] 						
14C02	Tissue/Cells	IHC		Pos. Control f. IHC	5 slides	04-10-8867
14C02	Mouse IgG2a	IHP	Hu	TC sup/w Azide	0.1 ml	04-10-3228
14C02	Mouse IgG2a	IHP	Hu	TC sup/w Azide	0.5 ml	04-10-3229
14C02	Mouse IgG2a	IHP	Hu	TC sup/w Azide	1 ml	04-10-3227
Applications						
<ul style="list-style-type: none"> - Immunohistology (Formalin/paraffin only) (Use Ab at 1:20-1:40 for 60 min at RT) * [Staining of formalin-fixed tissues REQUIRES boiling tissue sections in 10mM citrate buffer, pH 6.0, (BIOCARTA'S Cat. #AP-9003), for 10-20 min followed by cooling at RT for 20 min.] 						

Clone	Isotype	Applications	Specificity	Format	Size	Cat#
-------	---------	--------------	-------------	--------	------	------

anti-CD14 Ab-3						
UCHM-1	Mouse IgG2a	FCM, IFC	Hu	Purified/no Azide	100 ug	04-10-3233
UCHM-1	Mouse IgG2a	FCM, IFC	Hu	Purified/no Azide	200 ug	04-10-3234
UCHM-1	Mouse IgG2a	FCM, IFC	Hu	Purified/w Azide, BSA	20 µg	04-10-3231
UCHM-1	Mouse IgG2a	FCM, IFC	Hu	Purified/w Azide, BSA	100 µg	04-10-3232
UCHM-1	Mouse IgG2a	FCM, IFC	Hu	Purified/w Azide, BSA	200 µg	04-10-3230

APPLICATION:

- Flow Cytometry
(For direct, use 10µl of conjugated Ab/106 cells)
(For indirect, 0.5µg unconjugated Ab/106 cells)
- Immunofluorescence
- Immunohistology (Not assessed)

anti-CD14:RPE						
UCHM1	Mouse IgG2a		Hu	PE	100	11-05-12924

anti-CD14:RPE-Cy5						
TÜK-4	Mouse IgG2a	fl	Hu	RPE-Cy5	100	11-05-12925

anti-CD14-IgG						
UCHM1	Mouse IgG2a		Hu		1.0mg	11-05-12920

anti-CD14/CD13						
	Mouse	fl	Hu	FITC-RPE	50 TESTS	11-05-12923

anti-IKK ALPHA C1						
Polyclonal	Rabbit Ig				0.1mg	11-05-15132

anti-IKK ALPHA C2						
Polyclonal	Rabbit Ig				0.1mg	11-05-15133

anti-IKK ALPHA C3						
Polyclonal	Rabbit Ig				0.1mg	11-05-15134

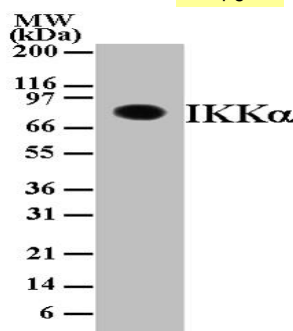
anti-IKKa						
14A231	Mouse IgG	WBL, IPR	Hu, Ms, Ms	Purified	100 µg	IMG-136

APPLICATION:

This antibody was raised against a His-tagged full-length human IKKa/IKK1 protein. This monoclonal antibody can be used for detection of IKKa/IKK1 expression by Western blot at 1 mg/ml. Whole cell lysate from Daudi cells can be used as positive control and an approximately 85 KDa band should be detected. This antibody recognizes human, mouse and monkey species.

Figure:

Western blot analysis of 30 µg of total cell lysate from Daudi cells with IMG-136 at 1 mg/ml dilution.



Clone	Isotype	Applications	Specificity	Format	Size	Cat#
-------	---------	--------------	-------------	--------	------	------

anti-IKKa/b, phospho-specific

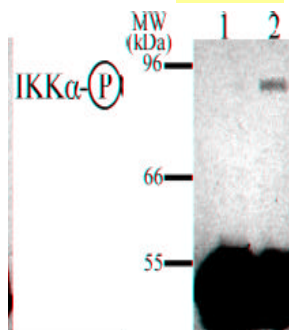
46A840 Mouse IgG Purified 100 µg IMG-186

APPLICATION:

This antibody specifically detects both phosphorylated forms of IKKa and IKKb by western blotting and immunoprecipitation, at 1:3-5 dilution. TNF induced Jurkat cells can be used as a positive control and an approximately 85-88 kD band should be detected.

Figure:

Jurkat cells were treated with (lane 2) or without (lane 1) 1 nM TNFα. The membranes were blotted with IMG-186 and immunoreactivity was detected by chemiluminescence. The data shows that IMG-186 specifically detects the phosphorylated form of IKKa/b.



anti-c-fos

CS93.2 Mouse IgG1 0.1mg 11-05-12707

CS93.2 Mouse IgG1 0.1mg 11-05-12707

Polyclonal Rabbit Ig 0.1mg 11-05-12708

anti-c-fos Ab-2

Polyclonal Synthetic BLK Blocking Peptide 200 ug 04-10-4547

Polyclonal Rabbit Ig WBL für polykl. Ak. Pos. Control f. Western 0.1 ml 04-10-4546

Polyclonal Rabbit Ig EIA, IPR, WBL Hu, Ms, Rt Purified/no Azide 100 ug 04-10-4544

Polyclonal Rabbit Ig EIA, IPR, WBL Hu, Ms, Rt Purified/no Azide 200 ug 04-10-4545

Polyclonal Rabbit Ig EIA, IPR, WBL Hu, Ms, Rt Purified/w Azide, BSA 20 µg 04-10-4542

Polyclonal Rabbit Ig EIA, IPR, WBL Hu, Ms, Rt Purified/w Azide, BSA 100 µg 04-10-4543

Polyclonal Rabbit Ig EIA, IPR, WBL Hu, Ms, Rt Purified/w Azide, BSA 200 µg 04-10-4541

APPLICATION:

- ELISA (For coating, order Ab without BSA)
 - Immunohistology (Use Ab-3)
 - Immunoprecipitation (Use Protein A)
- (Ab 10µg/mg protein lysate)
- Western Blotting (Ab 5µg/ml for 2hrs at RT)

anti-IKK BETA C3

Polyclonal Rabbit Ig 0.1mg 11-05-15135

anti-IKKb (For immunoprecipitation)

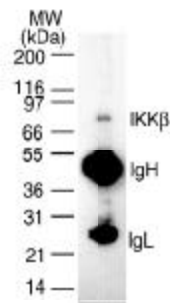
10A9B6 Mouse IgG WBL, IPR Hu Purified 100 µg IMG-159

APPLICATION:

This monoclonal antibody can be used for immunoprecipitation of IKKb/IKK2 protein from cell lysates. Whole cell lysate from Daudi cells can be used as positive control and an approximately. 87 KDa band should be detected.

Figure:

2mg of IMG-159 was used to immunoprecipitate IKKb from 1x10⁶ cells and the immuno-precipitated protein was detected by western blotting using IMG-129. IKKb was detected as a protein of ~87 kD size.



Clone	Isotype	Applications	Specificity	Format	Size	Cat#
-------	---------	--------------	-------------	--------	------	------

anti-IKKb

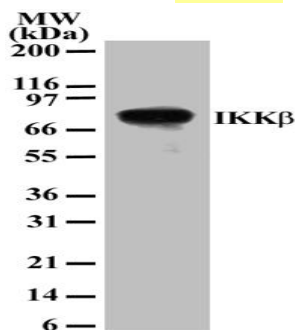
10AG2 Mouse IgG WBL Hu Purified 100 µg IMG-129

APPLICATION:

This monoclonal antibody can be used for detection of IKKb/IKK2 expression by Western blot at 1 mg/ml. Whole cell lysate from Daudi cells can be used as positive control and an approx. 87 KDa band should be detected.

Figure:

Western blot analysis of 30 µg of total cell lysate from Daudi cells with IMG-129 at 1 mg/ml dilution.



anti-IKKg

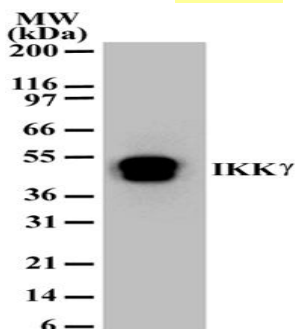
16A10 Mouse IgG Purified 100 µg IMG-137

APPLICATION:

This antibody was raised against a His-tagged full-length human IKK3/IKKg protein. This monoclonal antibody can be used for detection of IKK3/IKKg expression by Western blot at 1 mg/ml. Whole cell lysate from Daudi cells can be used as positive control and an approximately 48 KDa band should be detected.

Figure:

Western blot analysis of 30 µg of total cell lysate from Daudi cells with IMG-137 at 1 mg/ml dilution.



anti-IKKgamma

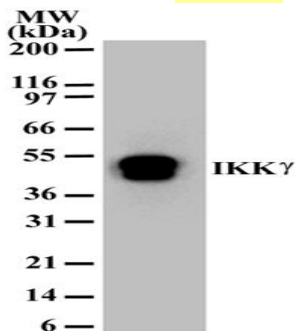
46B844 Mouse IgG1 WB Hu Purified 100 µg IMG-287

Application:

This antibody was raised against a His-tagged full-length human IKK3/IKKg protein. This monoclonal antibody can be used for detection of IKK3/IKKg expression by Western blot at 2 mg/ml. Whole cell lysate from Daudi cells can be used as positive control and an approximately 48 KDa band should be detected. This antibody does not react with mouse IKKg.

Figure:

Western blot analysis of 30 µg of total cell lysate from Daudi cells with IMG-287 at 2 mg/ml dilution.



anti-IRAK

Synthetic BLK Purified 100 µg IMG-179P

APPLICATION:

Blocking of IMG-179 activity in western blot.

Polyclonal Rabbit Ig 0.1mg 11-05-14516

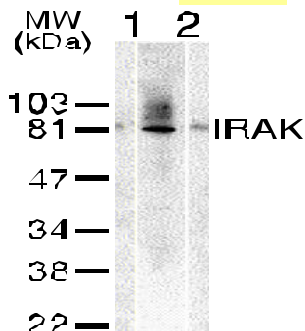
Polyclonal Rabbit Ig WBL Hu Purified 100 µg IMG-179

APPLICATION:

This polyclonal antibody can be used for Western blot at 1:1000 dilution and for immunoprecipitation with 2 to 4 µg per sample. THP-1 or HeLa whole cell lysate can be used as positive control and an 80 kDa band should be detected in the lysate from non-activated cells. It is human, mouse, and rat reactive, and has no cross response to IRAK2. For research use only.

Figure:

Western blot analysis for IRAK using IMG-179 at 2 µg/ml dilution against 10 µg/lane of THP-1 (lane 1) and HeLa (lan



Clone	Isotype	Applications	Specificity	Format	Size	Cat#
-------	---------	--------------	-------------	--------	------	------

anti-c-jun Ab-2						
Polyclonal	Synthetic	BLK		Blocking Peptide	200 µg	04-10-4598
Polyclonal	Rabbit Ig	WBL		Pos. Control f. Western	0.1 ml	04-10-4597
Polyclonal	Rabbit Ig	IPR, WBL	Hu	Purified/no Azide	100 µg	04-10-4595
Polyclonal	Rabbit Ig	IPR, WBL	Hu	Purified/no Azide	200 µg	04-10-4596
Polyclonal	Rabbit Ig	IPR, WBL	Hu	Purified/w Azide, BSA	20 µg	04-10-4593
Polyclonal	Rabbit Ig	IPR, WBL	Hu	Purified/w Azide, BSA	100 µg	04-10-4594
Polyclonal	Rabbit Ig	IPR, WBL	Hu	Purified/w Azide, BSA	200 µg	04-10-4592

APPLICATION:

- Immunoprecipitation (Use Protein A)
(Ab 10µg/mg protein lysate)
- Western Blotting (Ab 5µg/ml for 2hrs at RT)
- Immunohistology (Not assessed)

anti-Jun (phospho Ser 63)						
Polyclonal	Rabbit Ig	EIA, IPR, WBL	Hu	Unconjugated	200 µg	GA9966-1
Polyclonal	Rabbit Ig	EIA, IPR, WBL	Hu	Unconjugated	500 µg	GA9966-2

anti-Jun (phospho Ser 73)						
Polyclonal	Rabbit Ig	EIA, IPR, WBL	Hu	Unconjugated	200 µg	GA9959-1
Polyclonal	Rabbit Ig	EIA, IPR, WBL	Hu	Unconjugated	500 µg	GA9959-2

mouse c-jun						
Baculovirus					1ml	bvc-10126

anti-SKK2/MEK3						
Polyclonal	Rabbit Ig	EIA, IPR, WBL	Hu	Unconjugated	200 µg	GA9889-1
Polyclonal	Rabbit Ig	EIA, IPR, WBL	Hu	Unconjugated	500 µg	GA9889-2

anti-p38 HOG kinase						
polyclonal	Sheep Ig	IPR	Ms, Rt		250 µg	10-01-12384

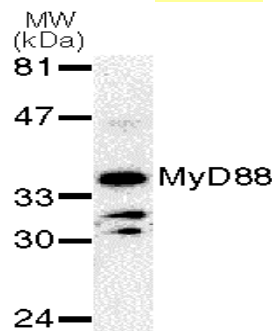
anti-MYD88						
	Synthetic	BLK		Purified	100 µg	IMG-178P
Polyclonal	Rabbit Ig	WBL	Hu	Purified	100 µg	IMG-178

APPLICATION:

This polyclonal antibody can be used for detection of MyD88 expression by Western blot at 2-4 mg/ml. Whole cell lysate from Jurkat cells can be used as positive control and a protein of approximate molecular weight of 35 KDa should be detected in the western blot analysis.

Figure:

Western blot analysis of MyD88 in Jurkat cell lysate using 2 mg/ml of IMG-178



Clone	Isotype	Applications	Specificity	Format	Size	Cat#
-------	---------	--------------	-------------	--------	------	------

anti-MYD88 CT

Polyclonal Rabbit Ig 0.1mg 11-05-15140

anti-MYD88 IN

Polyclonal Rabbit Ig 0.1mg 11-05-15139

anti-Human NFkB p50 Control PEPTIDE

50ug 11-05-14229

anti-NF-kappa B p50

Polyclonal Rabbit Ig EIA, IPR, WBL Hu, Ms Unconjugated 200 µg GA9971-1

Polyclonal Rabbit Ig EIA, IPR, WBL Hu, Ms Unconjugated 500 µg GA9971-2

anti-NF-kappa B p65

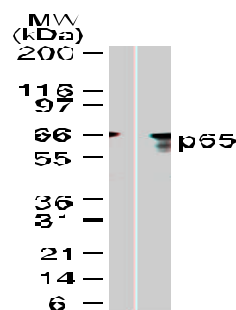
112A1021 Mouse IgG WBL, IPR Hu Purified 100 µg IMG-150

APPLICATION:

This monoclonal antibody can be used for detection of NF-kB (p65) expression by Western blotting, at 2 mg/ml dilution. Whole cell lysate from Daudi cells can be used as positive control and a band of approx. size 65 kD should be detected.

Figure:

Western blot analysis for NF-kB (p65) using IMG-150 at 2 µg/ml dilution against 10 µg of Daudi cell lysate.



anti-p105 Ab-1

2B3 Mouse IgM FCM, IHC Hu Purified/no Azide 100 ug 04-10-7296

2B3 Mouse IgM FCM, IHC Hu Purified/no Azide 200 ug 04-10-7297

2B3 Mouse IgM FCM, IHC Hu Purified/w Azide, BSA 20 µg 04-10-7294

2B3 Mouse IgM FCM, IHC Hu Purified/w Azide, BSA 100 µg 04-10-7295

2B3 Mouse IgM FCM, IHC Hu Purified/w Azide, BSA 200 µg 04-10-7293

anti-IkB-Alpha

Polyclonal Sheep Ig 0.1mg 11-05-13507

anti-IkBα

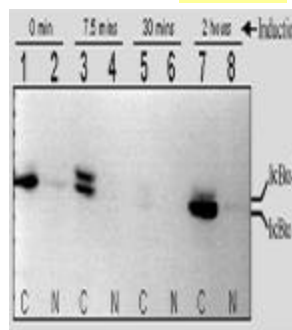
6A920 Mouse IgG WBL, IPR Hu, Ms Purified 100 µg IMG-127

APPLICATION:

This monoclonal antibody was raised against a 6 x His-tag fusion protein containing amino acid residues 105-291 of human IκBα. Clone 6A920 can be used for detection of IκBα expression by Western blot and immunoprecipitation at 1 mg/ml. Whole cell lysate from Daudi cells can be used as positive control and a 40 KDa band should be detected.

Figure:

Western Analysis with IMG-127. The data shows IMG-127 detect both phosphorylated and non-phosphorylated forms of IκBα.



Clone	Isotype	Applications	Specificity	Format	Size	Cat#
-------	---------	--------------	-------------	--------	------	------

anti-IkBa, phospho-specific

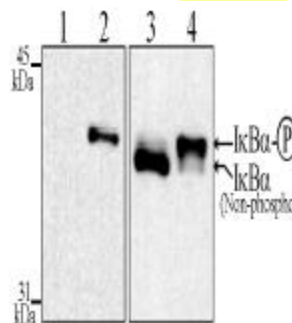
39A1413 Mouse IgG WBL, IPR Hu Purified 100 µg IMG-156

APPLICATION:

This monoclonal antibody was raised against a synthetic peptide containing phosphorylated serines at amino acid residues 32 and 36 of human IκBα. Clone 39A1413 detects specifically phosphorylated form of IκBα expression in TNFα treated cells by Western blot and immunoprecipitation at 1 mg/ml. TNFα treated Jurkat cells (Cat. # IML-156L) can be used as positive control. For detection of non-phosphorylated form of IκBα, Cat. # IMG-127, should be used.

Figure:

Western analysis of Jurkat cells with IMG-156 (lanes 1 & 2) or IMG-127 (that recognizes both non-phospho and phosphorylated forms of I-κBα). The data shows that IMG-156 detects specifically the phosphorylated form of IκBα.



anti-NF-Kappa B

Polyclonal Sheep Ig 0.1mg 11-05-13874

anti-NF-KB CREL

Polyclonal Rabbit Ig Hu 0.1ml 11-05-13871

anti-TAB1

82A1079 Mouse IgG WBL Hu Purified 100 µg IMG-243

APPLICATION:

This antibody can be used for detection of human TAB-1 by Western blotting, at 2-4 mg/ml dilution. Whole cell lysate from Jurkat cells can be used as positive control and an approximately 55 kD band can be detected.

anti-Tak1(TGF-beta-activated kinase), CT

Polyclonal Rabbit Ig EIA, IPR, WBL Hu, Ms Unconjugated 200 µg GA9890-1

Polyclonal Rabbit Ig EIA, IPR, WBL Hu, Ms Unconjugated 500 µg GA9890-2

anti-TLR-2 (Toll-like receptor 2)

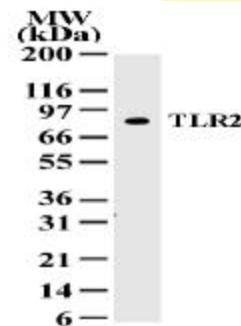
Mouse IgG1 FCM, WB Purified 100 µg IMG-319

APPLICATION:

This monoclonal antibody can be used for detection of TLR2 protein by western blotting (at 1:500-1000 dilution) and flow cytometry. Whole cell lysate of Ramos can be used, as positive control and a protein of approximate molecular weight of 86 KDa should be detected in western blotting.

Figure:

Western blot analysis of TLR2 in cell lysates from Ramos using IMG-319 at 1:500 dilution.



anti-TLR-3 (Toll-like receptor 3)

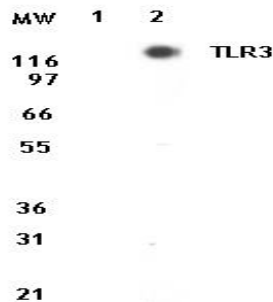
40C1285 Mouse IgG1 FCM, WB Purified 100 µg IMG-315

APPLICATION:

This monoclonal antibody can be used for detection of TLR3 protein in western blot analysis at a dilution of 2 mg/ml. Whole cell lysate

Figure:

Western blot analysis of TLR3 in lysates from untransfected 293 cells (lane 1) and 293 cells transfected with human TLR3 cDNA (lane 2). IMG-313 detects TLR3 only in transfected cell lysate.



Clone	Isotype	Applications	Specificity	Format	Size	Cat#
-------	---------	--------------	-------------	--------	------	------

anti-TLR-4 (Toll-like receptor 4)

Mouse IgG1

FCM, WB

Purified

100 µg

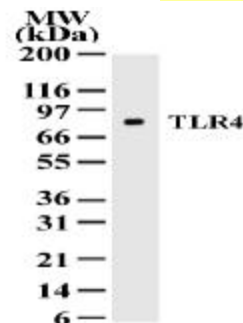
IMG-320

APPLICATION:

This monoclonal antibody can be used for detection of TLR4 protein by western blotting (1: 500-1000 dilution) and flow cytometry. Whole cell lysate of Ramos can be used as positive control and a protein of approximate molecular weight of 88 KDa should be detected in western blotting.

Figure:

Western blot analysis of TLR4 in cell lysates from Ramos using IMG-320 at a dilution of 1:500 dilution.



anti-TLR-6 (Toll-like receptor 6)

86B1153

Mouse IgG1

Purified

100 µg

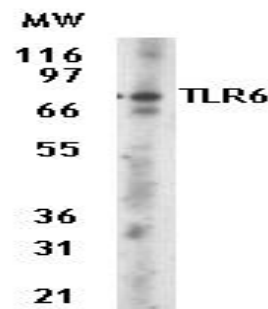
IMG-304

APPLICATION:

This monoclonal antibody can be used for detection of TLR6 protein by western blot and flow cytometry analysis. Whole cell lysate from Daudi or Ramos cells can be used as positive control and protein band of approximate molecular weight of 92 KDa band should be detected in western blotting.

Figure:

Western blot analysis of TLR6 in Daudi cell lysate using IMG-304.



anti-TLR-8 (Toll-like receptor 8)

44C143

Mouse IgG1

WB

Purified

100 µg

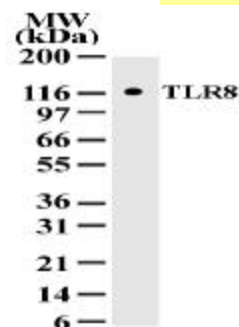
IMG-321

APPLICATION:

This monoclonal antibody can be used for detection of TLR8 protein by western blotting and flow cytometry. Whole cell lysate from human peripheral blood monocyte cells (PBMC) can be used, as positive control and a protein of approximate molecular weight of 120 KDa should be detected in western blotting.

Figure:

Western blot analysis of TLR8 in cell lysates from 293 transfected with human TLR8 using IMG-321 at a dilution of 2 mg/ml.



anti-TLR-9 (Toll-like receptor 9)

26C593

Mouse IgG1

Purified

100 µg

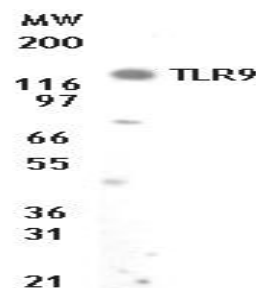
IMG-305

APPLICATION:

This monoclonal antibody can be used for detection of TLR9 protein by western blotting and flow cytometry. Whole cell lysate from human peripheral blood monocyte cells (PBMC) can be used, as positive control and a protein of approximate molecular weight of 120 KDa should be detected in western blotting.

Figure:

Western blot analysis of TLR9 in cell lysates from human PBMC using IMG-305 at a dilution of 2 mg/ml.



Clone	Isotype	Applications	Specificity	Format	Size	Cat#
-------	---------	--------------	-------------	--------	------	------

anti-Traf-6

Polyclonal Rabbit Rabbit Hu unconjugated 0.1 ml 12-01-16392

anti-TRAF6

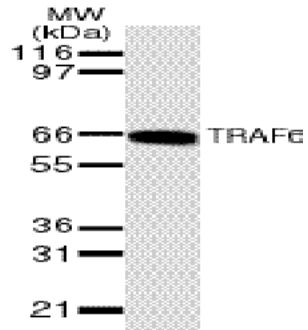
20A1457 Mouse IgG WBL Hu Purified 100 µg IMG-154

APPLICATION:

This monoclonal antibody can be used for detection of TRAF6 by Western blot at 2 mg/ml dilution. HeLa cell lysate can be used as positive control and an approximately 66 KDa band should be detected.

Figure:

Western blot analysis of TRAF-6 using IMG-154 at 2-mg/ml dilution against 10 mg of HeLa cells.





Inquiry

Name	<input type="text"/>	Title	<input type="text"/>
E-Mail Address	<input type="text"/>		
Institute	<input type="text"/>		
Dept	<input type="text"/>		
Building	Room	<input type="text"/>	
Address	<input type="text"/>		
Address2	<input type="text"/>		
City	State	Zip	<input type="text"/>
Tel	Fax	<input type="text"/>	
Country	<input type="text"/>		
URL	<input type="text"/>		

Date

How would you like to receive product information? Mail E-mail Both

What areas of product and service are you interested in?

- | | |
|--|---|
| <input type="checkbox"/> Polyclonal antibody Development | <input type="checkbox"/> Antibody |
| <input type="checkbox"/> Monoclonal antibody Development | <input type="checkbox"/> Flow Cytometry |
| <input type="checkbox"/> Baculovirus Expression | <input type="checkbox"/> Gene Chip |
| <input type="checkbox"/> Recombinant Protein | <input type="checkbox"/> Tissue Array |

What area of Research are you interested in?

- | | |
|---|--|
| <input type="checkbox"/> Apoptosis | <input type="checkbox"/> Cell Cycle Regulation |
| <input type="checkbox"/> Adhesion | <input type="checkbox"/> Developmental Biology |
| <input type="checkbox"/> Cytokine/Chemokine | <input type="checkbox"/> Molecular Biology |

Enter any other requests:

For custom baculovirus expression service and polyclonal antibody development, please contact customerservice@biocarta.com for more information
